



TRACK RENOVATION PHASE IV: Running Rail, Switch Steel, Tie & Fastener Replacement

ANTHONY RIVIERE – SENIOR PROJECT MANAGER

KELI DAVIS - DIRECTOR FACILITIES, CAPITAL DELIVERY PROGRAM

MARTA Riders' Advisory Council
December 7, 2022

Rail components are subject to extreme stress and have a limited life span:

Rail Fasteners



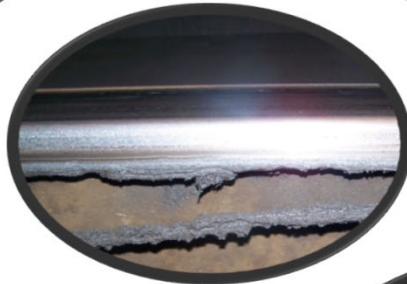
Turnouts



Contact Rail & Cover Board



Running Rail



Cross Ties



Switches



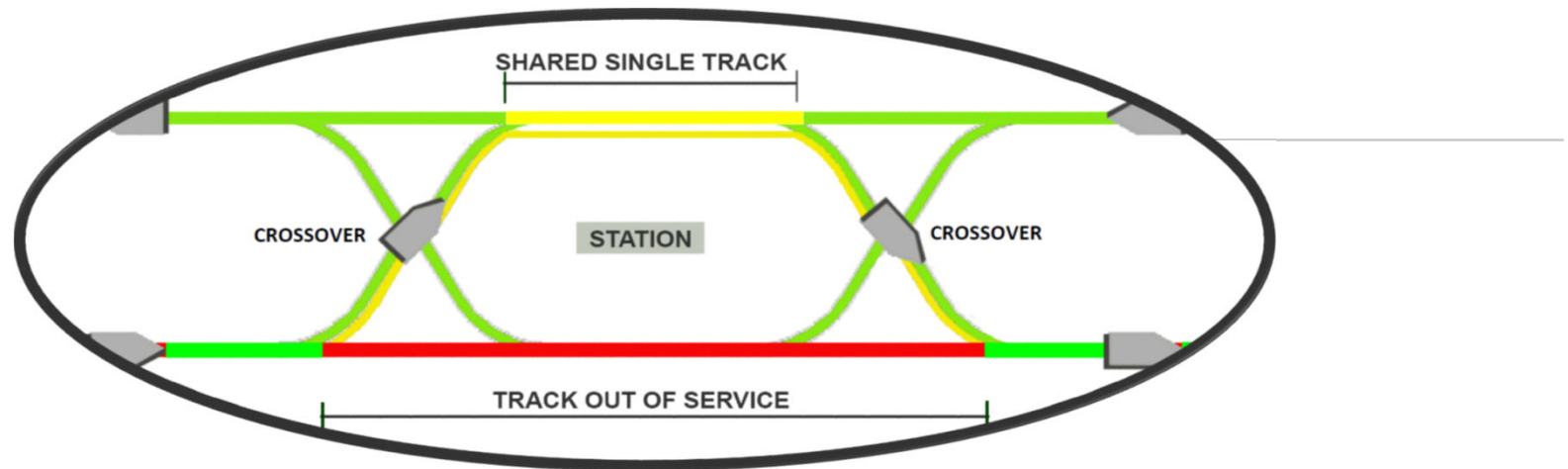
Ballast



Crossovers



The replacement of most of these components can be performed while the system is in operation. This is accomplished by single tracking around the area.



Since single tracking creates delays in service, Operational SOP defines when these events may be implemented.

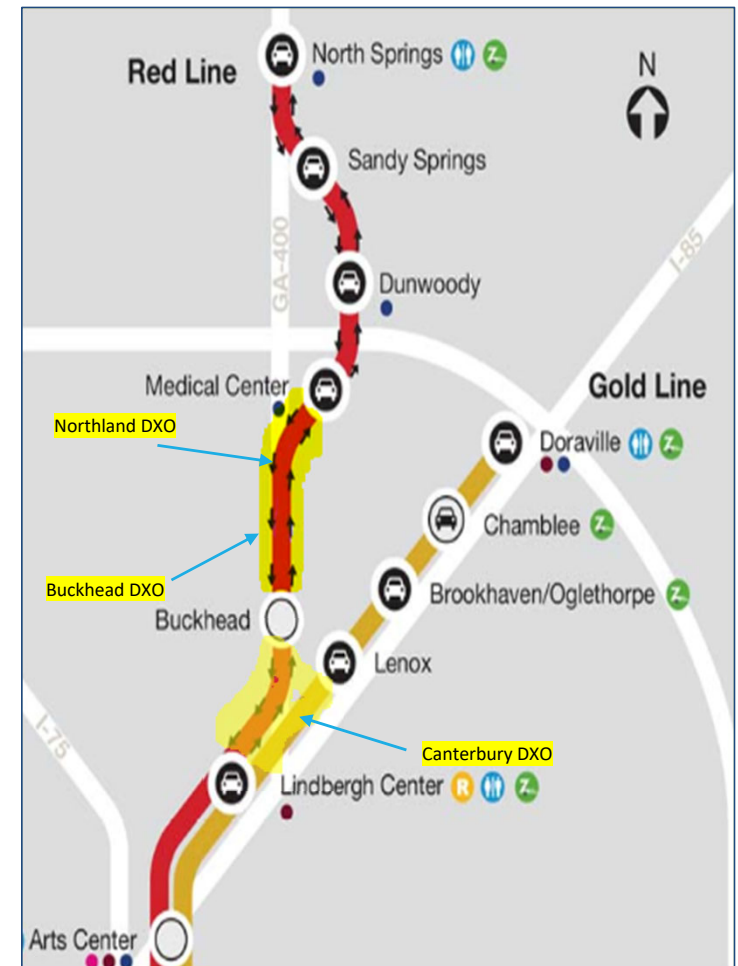
Type	Hrs.	Start / End Times
Long Weekend	54	Fri 9:30P - Mon 4:00A
Short Weekend	30	Fri 9:30P - Sun 4:00A Sat 9:30P - Mon 4:00A
Week Night	6	9:30P - 4:00A
Non-Revenue	2	2:00A - 4:00A

The Authority has a phased approach to Rail Renovation and Replacement

Project	Dates	Running Rail	Fasteners	Cross Ties	Contact Rail	Switch Steel	Crossovers	Turnouts
TR (Phase I)	1999 – 2003	✓	✓	✓				
TR II	2003 – 2006		✓	✓	✓	✓		
TR III	2011 - 2015	✓	✓	✓	✓		✓	✓
TR IV	2018 – 2026	✓	✓	✓	✓	✓	✓	✓

The most challenging part of the TR IV project is the replacement of three (3) diamond crossovers (DXO):

Location	Dates
Canterbury DXO	February 11 – 17, 2021
Northland DXO	February 18 – 24, 2022
Buckhead DXO	February 17 - 22, 2023





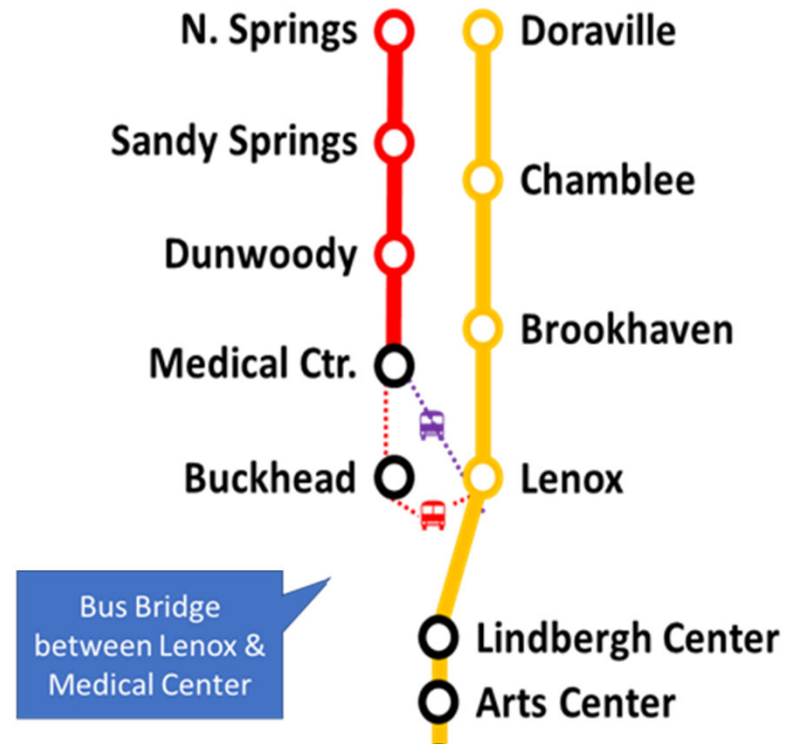
TR IV will start on Friday Feb. 17, 2023 at 9:30 p.m. thru Thursday Feb. 23, 2023 at 4:00 a.m. The 5-day rail outage will occur all day **Saturday, Sunday, Monday, Tuesday, and Wednesday**. Single tracking will occur Thursday Feb. 23 through the end of service Saturday Feb. 25, 2023; all tracks will be returned to service at 5:00 a.m., Sunday Feb. 26, 2023.

 =Express Bus Bridge serving:

- Lenox
- Medical Center

 =Local Bus Bridge serving:

- Lenox
- Buckhead
- Medical Center





Transit Ambassadors

To minimize customer inconvenience during TR IV and other major events, MARTA enlists administrative staff – and Riders' Advisory Council members – to serve as ambassadors.

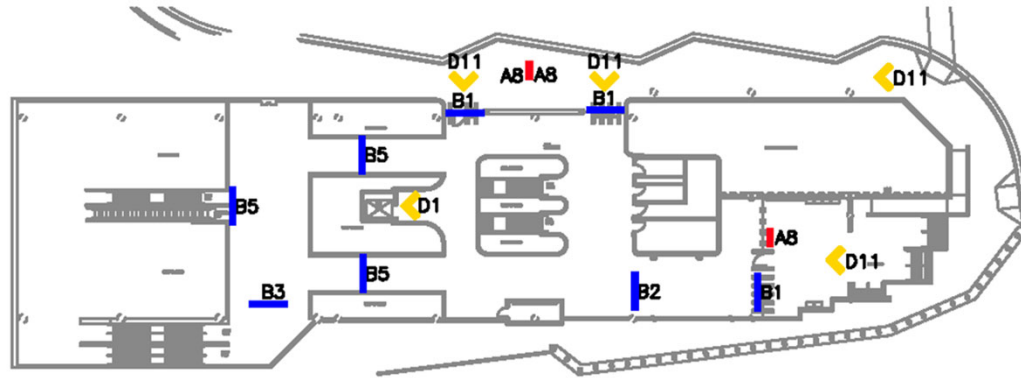
The volunteer ambassadors improve the ridership experience by:

- Greeting customers
- Giving directions
- Helping with BVMs
- Enhancing visibility



Examples of Station Wayfinding Signage

Lindbergh Center Station



Track Replacement	Red Line Service Impact	Feb 18 - Feb 23
RED Line Service SUSPENDED Between Airport And Medical Ctr Stations	- NO RED LINE TRANSFER - Transfer at LENOX Station For Bus Shuttle to RED Line Stations	
	NO HAY SERVICIO DE TRANSFERENCIA PARA LÍNEA ROJA Transferecia a la estación LENOX para tomar autobús de traslado a estaciones de línea ROJA	

Banner B5

Track Replacement	Feb 18 - Feb 23
Red Line Service Impact	RED Line Service Impact
Take GOLD Line Northbound Train To LENOX For RED Line Stations North of Lindbergh	
EXPRESS Service	<ul style="list-style-type: none"> Lenox Dunwoody
LOCAL Service	<ul style="list-style-type: none"> Lenox Buckhead (Bus Service Only) Medical Center (Bus Service Only) Dunwoody
Tome el tren de línea DORADA a LENOX para estaciones de línea ROJA al norte de LINDBERGH	

A Frame A8

Feb 18 - Feb 23

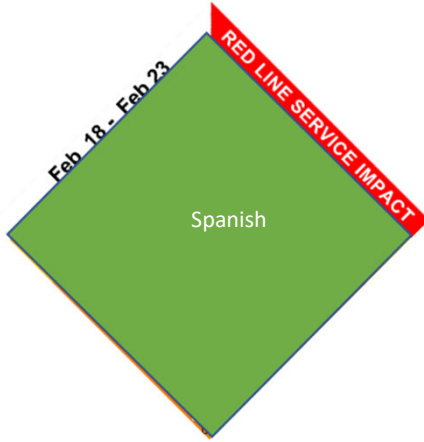
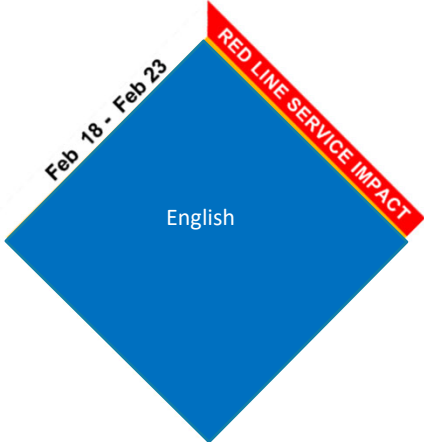
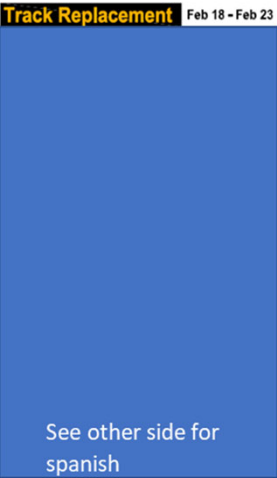
RED LINE SERVICE IMPACT

RED Line Service SUSPENDED Between Airport and Dunwoody Stations

Servicio de línea ROJA SUSPENDIDO entre las estaciones Airport y Dunwoody

Decal D11

Wayfinding Signage Changes



QUESTIONS?